

## GFF 1527.35~1566.65nm

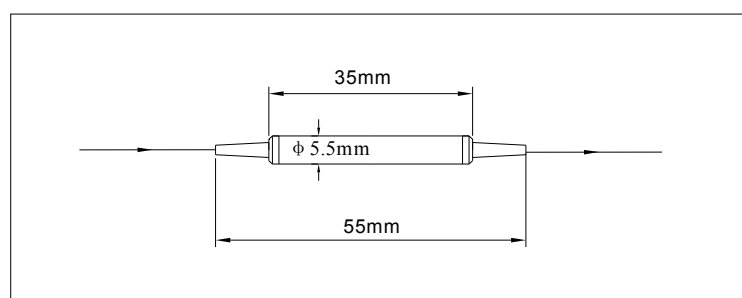
		<b>Customer:XXXX</b>
<b>Spec. Number</b>	<b>CAT0978 Rev.01</b>	<b>N/A</b>
<b>Date</b>	<b>2016-06-24</b>	<b>N/A</b>
<b>Part Number</b>		<b>NA</b>

### Specifications

Type Parameter	CRITERIA
Operating wavelength (nm)	1527.35~1566.65
GFF Target(Including packaging loss)(dB)	Read attached TARGET CURVE
Peak Insertion Loss (dB)	≤0.40
Error Function(Peak to Peak) in Operating wavelength range (dB)	≤0.70
PDL (dB)	≤0.15
Return loss(dB)	≥50
PMD(ps)	≤0.10
Fiber Type	SMF-28e For all ports
Operating temperature (°C)	-5 ~ +70
Storage temperature (°C)	-40 ~ +85
Dimensions (mm)	Φ5.5×L35(P1) Φ5.5×L38(P2)
Color Coding	None
Fiber Length(m)	≥1.0
Conector Type	None

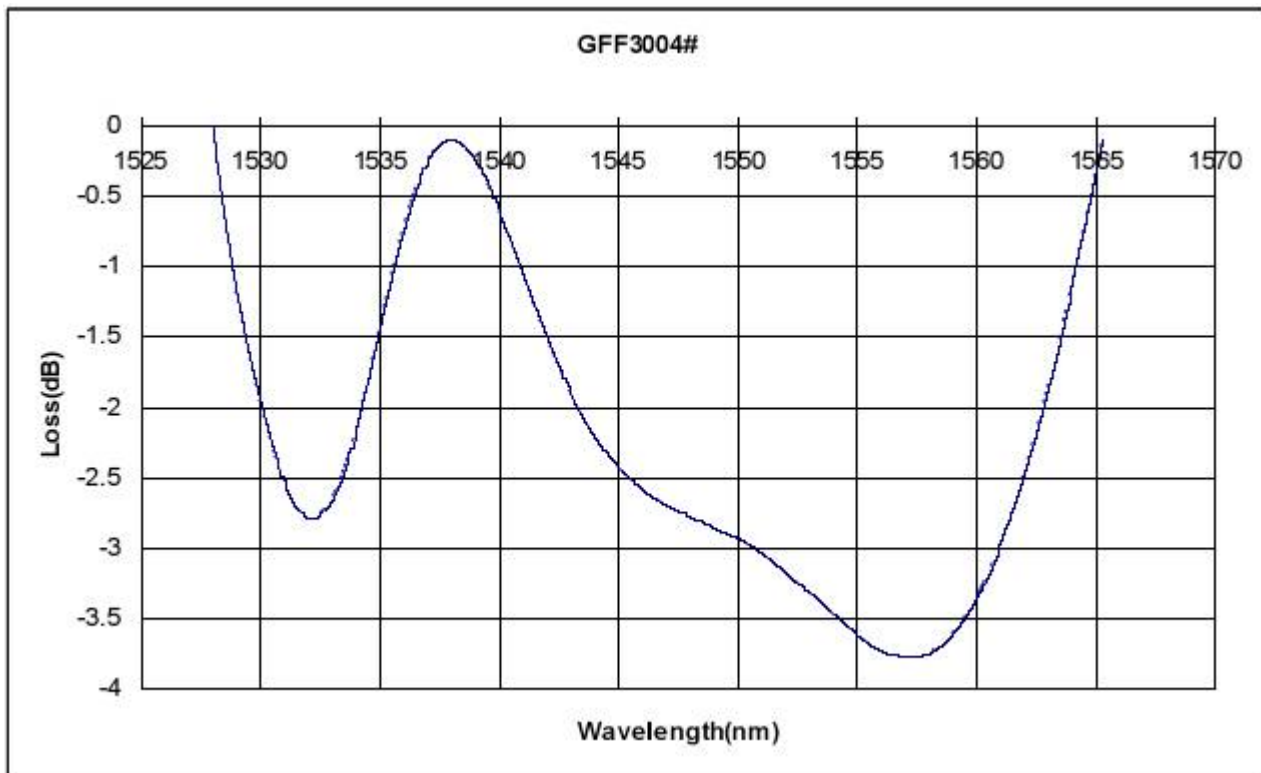
\*Above specifications are for device without connector.

### Package Dimensions



## GFF 1527.35~1566.65nm

**TARGET CURVE:**



**Ordering Information:**

GF F	Wavelength	GFF1/2	0	Pigtail Type	Length	Connector	Customer
	1546=1527.35~1566.65 nm	GFF3=GFF3004# XXXX: Customized GFF spectrum	0	1=250um bare fiber 2=900um loose tube	Q=0.25m H=0.5m 1=1.0m 8=0.8m	0=None 1=FC/UPC 2=FC/APC 3=SC/APC 4=SC/UPC 6=LC/PC 7=LC/APC S=Specify	Customer= -XXXX